

## OMAR 2

### SERVICE BOAT (CATMARAN)

#### MAIN PARTICULARS

Principal Dimensions	
Name of Vessel	OMAR 2
Ship's Type	SERVICE BOAT (CATMARAN)
Length Over All	20.00 M
Length B.P	
Breadth Moulded	7.35Mtrs
Extreme Draft	2.0 Mtrs (From USK)
Max speed	12 knt
Place Of Built	RASHEED, EGYPT
Year of Built	2020
Port of Registry	ALEX
Vessel Flag	EGYPT
Clear Deck Area	60 m2

Main Machinery	
Main Engine	2 x 500 BHP, GUASCOR
Gear box	3.5/1
Main Propulsion	2 x AZIMUTH
Main Generator	1 x 60 Kw,
Emergency Generator	1 x 40 Kw

EQUIPMENT AND ELECTRONICS	
Navigation Equipment	
Radar	1 sets (X Band 3cm)
Echo sounder	1 set
GPS	1 Set + 1 Repeater at Aft Console
Magnetic Compass	1 set
AIS	1 set
Camera system	Available

Fire Fighting/ extinguishing system:
Comply with SOLAS

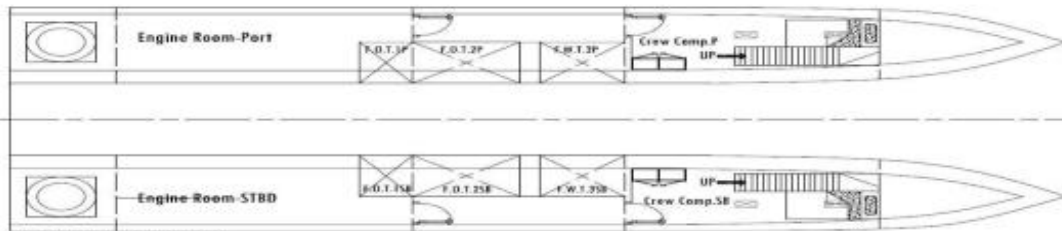
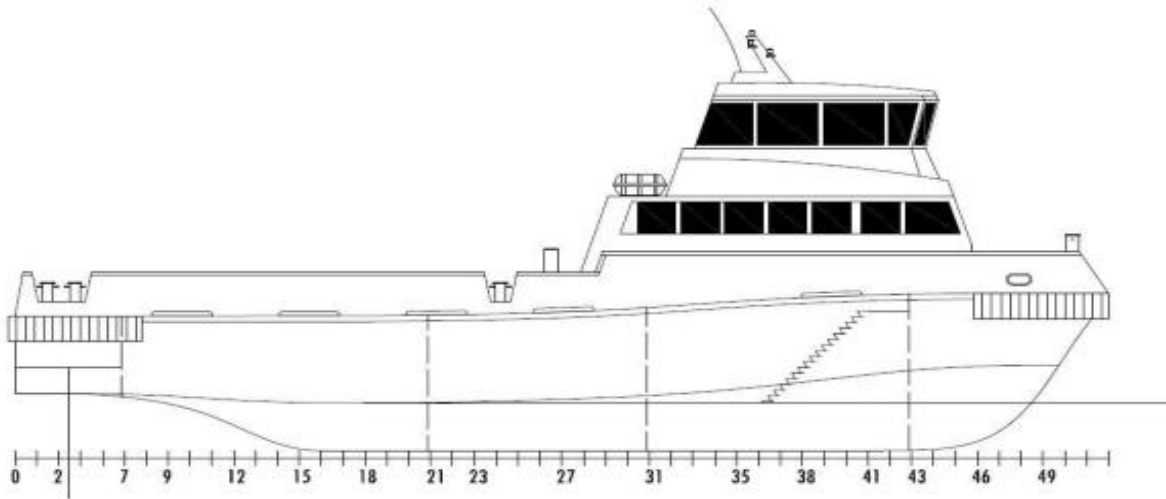
Capacity	
diesel Oil	14 m3
Fresh Water	7 m3
sea water	10 m3

Accommodation	
Air conditioning	
Crew Berths	10 Pax
Passenger seats	18 Pax

Deck Machinery	
Capstan / Anchor Windlass	Available

GMDSS System	
Area A1 / A2	
Fixed VHF	2 Set ( 1 at each console )
SSB	1 Set
Portable VHF Radio	2 Sets + Charger

Life Saving / Rescue Equipment.
Comply with SOLAS



Over All Length: 20.00 Meters  
 Over All Beam: 7.35 Meters  
 Depth: 3.07 Meters